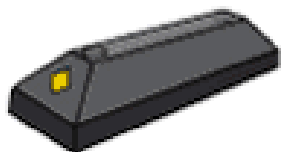


Installations Instructions

Step 1

Determine the location of the Wheel Stop and sweep the surface clean of debris / dust. Use chalk to mark the center lines (parallel and perpendicular to the direction of the street) and border lines on the surface.

Step 2



Assemble and position the units, starting from the center line (parallel to the direction of the street).

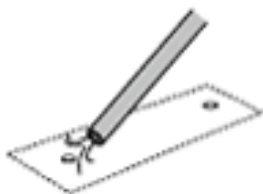
Note: Make sure the units are tight and well aligned before moving on to step 3.

Step 3



Drill 12MM diameter holes into the surface, through the existing holes of the placed units. The holes should be 120-140MM deep in order to accommodate the plastic shields that are 100MM long.

Step 4



Make sure the holes are clear of dust and debris before installing the shields. After each hole is drilled, insert a plastic shield in order to keep the units from shifting.

Note: (A portable blower is useful for this purpose)

Step 5



Insert the bolts and steel washers into the product installation holes and tighten every element.