

WHY BUY TENSABARRIER® ?

THE SAFEST AND MOST DURABLE BARRIER ON THE MARKET

Tensator® is the inventor of the original retractable queuing barrier- setting the market standard for crowd control products. Whether you want to manage your queuing space, or cordon off access to a restricted area, there will be a Tensabarrier® for your needs.



Wall Unit Features



Mounting Options

- Choice of mounting options, making installation on any surface possible.



Body Types

- Customisable choice of wall unit casings; plastic body with coloured end caps or steel outer body depending on application and budget.



Webbing Thickness

- Made from 0.89 military grade fabric - meaning they are significantly thicker than other retractable barriers.
- Less likely to degrade over time and the thread will not unravel if cut.
- Digital dye printed webbing allows for a higher quality print, ideal for branding opportunities.

Safest Barrier on the Market



Cassettes

- The original retractable cassette based on seatbelt technology, it is the only cassette designed to automotive reliability standards.
- Most unique braking system on the market.
- Webbing retracts 2 seconds slower than competitor products.



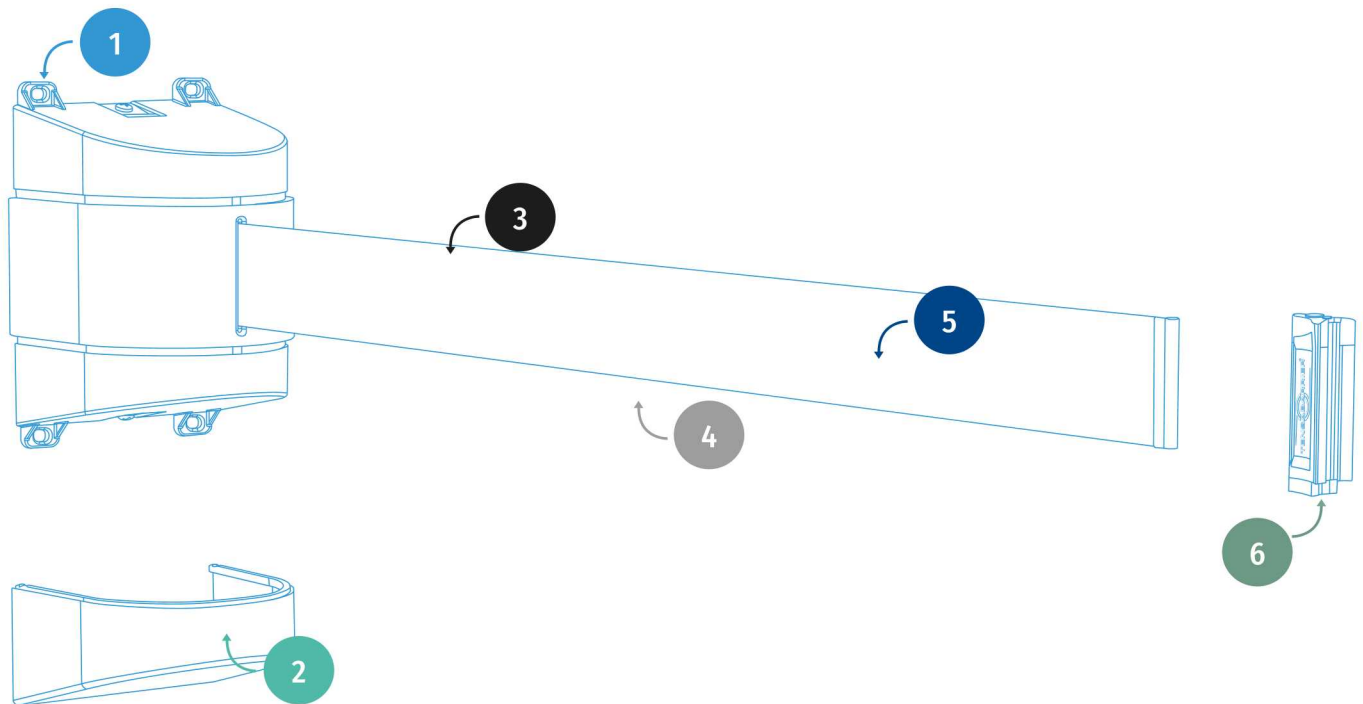
Anti-Tamper Tape End

- Variety of tape end options, including the anti-tamper tape end which prevents the webbing accidentally detaching from corresponding wall clip.

CUSTOMISING

YOUR TENSABARRIER®

Our products are all customisable, so we are able to create the perfect Tensabarrier® to suit your application and environment. Once you have chosen your selected wall unit style you can choose from a wide range of customisable options.



1 Fixing Options

Select a fixing that suits your application

We have individually developed a variety of different fixing options to suit all environments that may require a retractable barrier. This includes solutions for: warehouse racking, glass surfaces, metal surfaces, pole mounting and semi-permanent installation.

2 Unit Finishes

Decide between a metal post or a plastic post

We offer both steel wall units and plastic wall units in a variety of colours for you to choose from. Metal wall units are more suitable for customer-facing environments or industrial areas, whilst our plastic units are ideal for health and safety situations.

3 Webbing Options

Select a single or wide webbing cassette

Your Tensabarrier® can be built with either a single line of webbing which is 50mm wide, dual line webbing which consists of two 50mm wide webbing belts, or wide webbing which is 150mm wide - each offering their own benefits.

4 Webbing Lengths

Select your webbing belt length

Choose the length your webbing belt extends to; this is dependent on what area you are looking to cover. For customer-facing environments, we would recommend a shorter webbing belt, as this gives you more control over your barrier, however for site safety or outdoor environments, we would suggest a longer belt so that you can cordon off larger spaces using a single belt.

5 Webbing Design

Design your webbing belt

We have a large range of webbing colours to choose from. This includes vibrant and bold plain colours, striped and chevron printed designs, high visibility reflective webbing, health and safety messages, or design your own bespoke webbing.

6 Tape End Options

Pick a tape end for your webbing belt

We have created a selection of tape ends to go on the end of your retractable webbing belt. These are used to connect the webbing belt to a post, fix to a wall or a variety of surfaces, including metal or glass.

1 Fixing Options

TensabARRIER® wall units offer a choice of 6 mounting options and make installation on any surface possible.



STANDARD MOUNT

Easily and securely screw onto a wall or sturdy surface. The screws are concealed by end caps for discreet mounting.



REMOVABLE (SEMI PERMANENT)

Slides onto a mounting plate which is screwed into a wall, providing a semi-permanent installation.



WAREHOUSE RACK MOUNT

Clips to the keyholes on standard warehouse racking for instant mounting and removal.



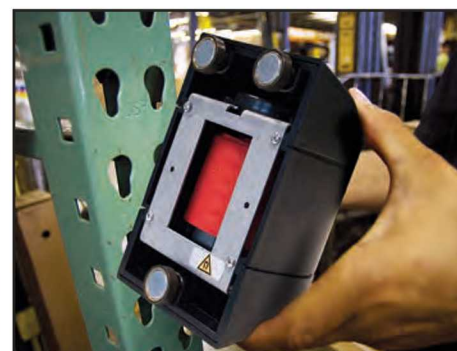
GLASS MOUNT

Strong adhesive pads attach the wall mount to any glass surface.



CLAMP MOUNT

Ideal for mounting to an upright such as a pole or warehouse storage rack. Simply tighten screws on the hose clamp for fast, secure mounting.



MAGNETIC MOUNT

Powerful magnets fasten the wall unit to almost any metal surface. Can be removed with a simple twist and pull motion.

2 Wall Unit Finish Options

We have a selection of finishes and colours for our metal and plastic wall units, to customise your barrier to suit your environment.

Powder Coated Wall Units



BLACK
Product Code: 33S



BLUE
Product Code: 23



GREEN
Product Code: 28



WHITE
Product Code: 32



SILVER
Product Code: 91



DOVE GREY
Product Code: 92



HAMMER GREY (TEXTURED)
Product Code: 73



CHARCOAL GREY (TEXTURED)
Product Code: 80



RED
Product Code: 21



YELLOW
Product Code: 35

Metal Wall Units



POLISHED CHROME
Product Code: 1P



BRUSHED STAINLESS
Product Code: 3B

Plastic Wall Units



BLACK
Product Code: 33



YELLOW
Product Code: 35



RED
Product Code: 21



POLISHED CHROME EFFECT
Product Code: 1P

3 Webbing Options

Some Tensabarrier® wall units can be built with either a single line of webbing which is 50mm wide, dual line webbing which consists of two 50mm wide webbing belts, or wide webbing which is 150mm wide - each offering their own benefits.



STANDARD



DUAL LINE



WIDE



4 Webbing Lengths

Our 50mm standard webbing is available in a variety of lengths to suit your requirements: 2.3m, 3.65m, 4.6m, 7.7m and 9m. Our 150mm wide webbing is available in 2 meter lengths. It is advised that webbing isn't fully extended when in use as this can damage the spring.



2m
Product Code: P



2.3m
Product Code: STD



3.65m
Product Code: MAX



4.6m
Product Code: 4.6



7.7m
Product Code: 7.7



9m
Product Code: 9

5 Webbing Design

We offer a variety of different webbing options for you to customise your wall unit with. Below are our standard plain, chevron, stripe, NightView™ and printed safety message webbing colours. We also offer a bespoke webbing service where we can create your ideal design for you. This service is great for incorporating your brand's logo or personalised warning messages.

Vibrant & Bold

Durable and resistant to wear.



WHITE
Product Code: B1



GREY
Product Code: B5



DARK GREY
Product Code: B7



BLACK
Product Code: B9



LIGHT GREEN
Product Code: G2



GREEN
Product Code: G6



DARK GREEN
Product Code: G7



LIGHT BLUE
Product Code: L3



BLUE
Product Code: L5



DARK BLUE
Product Code: L7



NAVY BLUE
Product Code: L9



ORANGE
Product Code: O5



PURPLE
Product Code: P5



RED
Product Code: R5



MAROON
Product Code: R7



YELLOW
Product Code: Y5

Striped & Chevron

Dual-coloured to increase visibility.



RED CHEVRON
Product Code: D3



YELLOW CHEVRON
Product Code: D4



BLUE STRIPE
Product Code: S1



RED STRIPE
Product Code: S2



WHITE STRIPE
Product Code: S3



YELLOW STRIPE
Product Code: S4

NightView®

Create a safer working environment and improve visibility significantly with the world's only reflective webbing.



RED CHEVRON
Product Code: NV-D3



YELLOW CHEVRON
Product Code: NV-D4

Pre-Printed Messages - Double Sided Print

Choose from a selection of safety messages to restrict access or identify hazards before they cause harm.

CLEANING IN PROGRESS

CLEANING IN PROGRESS

Product Code: YC

LIFT OUT OF SERVICE

LIFT OUT OF SERVICE

Product Code: YL

AUTHORISED ACCESS ONLY

AUTHORISED ACCESS ONLY

Product Code: RA

BEWARE OPEN PIT 

BEWARE OPEN PIT

Product Code: YO

DANGER FORKLIFT TRUCKS

DANGER FORKLIFT TRUCKS

Product Code: YG

NO ENTRY

NO ENTRY

Product Code: RB

EMERGENCY EXIT

EMERGENCY EXIT

EMERGENCY EXIT

Product Code: GE

CAUTION - DO NOT ENTER

CAUTION - DO NOT ENTER

Product Code: YA

Custom Printing

Upgrade to a custom webbing and create your own design masterpiece in either standard 50mm or eye-popping 150mm width webbing. All custom Tensabarrier® webbings are digitally created so your design can use unlimited colours. Tensabarrier® webbing is always dye-sublimated which means your logo or message won't scratch or peel off in use, unlike screen print used on some competitors products.



6 Tape End Options

We offer a variety of different tape ends to suit your application.



ANTI - TAMPER

Included as standard with all Tensabarrier® posts and wall units. Provides maximum safety by preventing accidental release of the webbing.



SOFT RUBBER

The soft rubber tape end is easier to remove than the anti-tamper tape end, but more secure than the panic break tape end. Ideal for regularly changing queue layouts.



PANIC BREAK

Provides a panic breakaway in both directions, allowing for a fast exit in an emergency.



MAGNETIC

The tape end contains a magnet, so that the webbing can be attached to metal surfaces without the need for a receiver clip.



ONE WAY LOOP

The one way loop tape end simply hooks and locks in place to a corresponding wall clip.



WIRE CLIP

A metal clip secures the belt end by looping around an upright structure and clipping back onto the webbing. Ideal for warehouse environments.

MILTON KEYNES
+44 1908 684 600

NEW YORK
+1-800-441-0019

DUBAI
+971 4 2997 228

PARIS
+33 1 43 09 85 00

FRANKFURT
+49 69 3003 89 010

WROCLAW
+48 71 359 3800