

O & M Manual for MANUAL LIFTING BARRIER



OPERATION

To Raise the Barrier:-

Unlock and remove padlock from the boom end support post

Withdraw the locking pin from the boom end support post

Gently push down on the handle on the boom carrier until the barrier is in the fully raised position

Once fully raised, the padlock should be used to secure the boom carrier in the vertical position using the locking points on the pedestal.

To Lower the Barrier:-

Unlock and remove the padlock from the barrier pedestal.

Gently lower the barrier by pulling the handle upwards until the boom is in the horizontal position.

Once fully lowered into the boom end support post, insert the locking pin into the yoke.

Use the padlock to secure the locking pin in the end support post.

MAINTENANCE

Check fixing down bolts are secure.

Check hinge assembly. Tighten and grease as necessary.

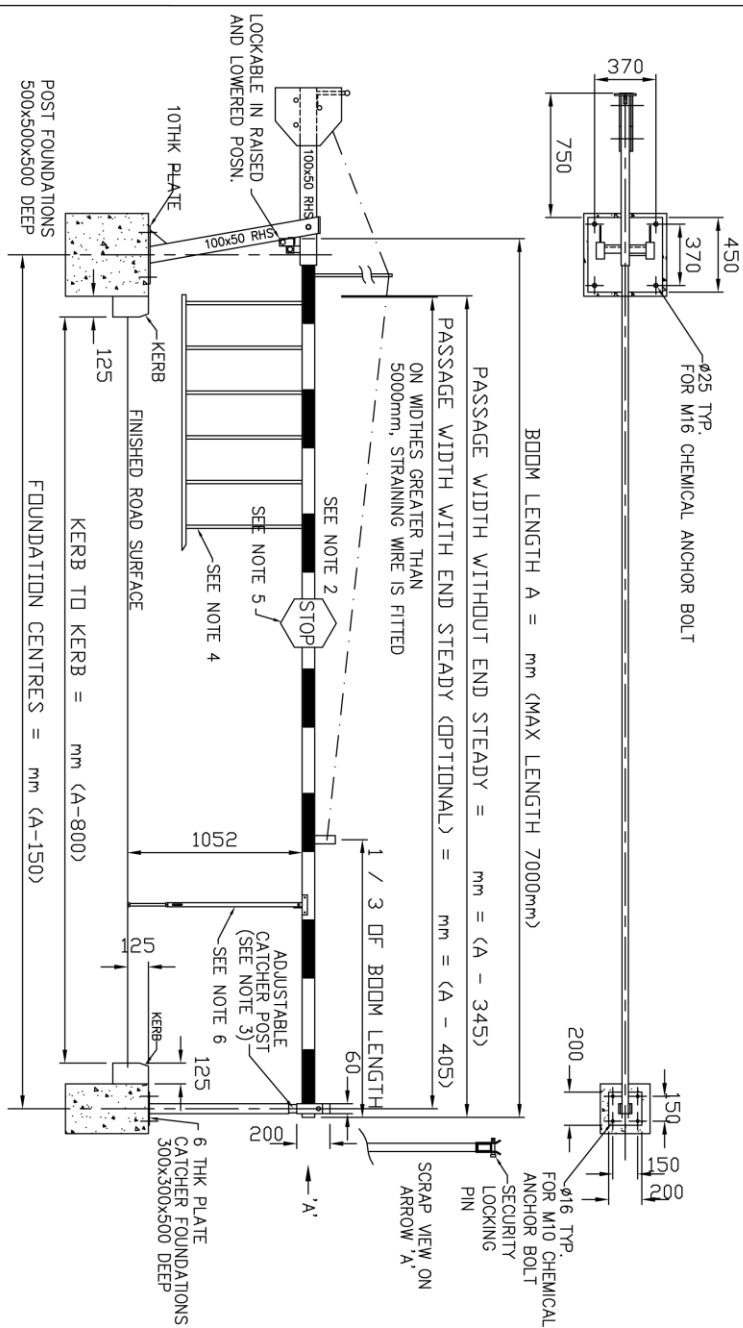
Check boom clamping bolts and tighten as necessary.

Check the paint finish and touch-up as necessary.

Check counterweight / handle fixings and tighten as necessary.

Clean boom arm on a regular basis and replace damaged fascial as necessary.

Drawing



- NOTES:
1. MANULI BARRIER, POWDER COATED TO CLIENTS SPEC. SECURE WITH 4x16x16x190 ANCHORS.
2. BOM RECTANGULAR A.T.: 76x39mm
3. BOMER COATED WHITE
4. RED FUSOL, STRIPES 60x350mm AT 750mm CENTRES.
5. CATHER POST – SECURE WITH 4x12x160 CHEMICAL ANCHORS
6. CATCHER POST SHOWN IS SUPPLIED AS STANDARD.
7. BOM MOUNTED SKIRT – UNDERSLUNG (OPTIONAL).
8. BOM MOUNTED SIGNS – 'STOP' / 'NO ENTRY' (OPTIONAL).
9. POGO STICK, (OPTIONAL).

	A	PREVIOUSLY 05-04-001	M.J	21/12/04	Drawn	Traced	Checked	Approved	Date
	ISSUE	REVISION	SIG.	DATE	M.J				12/0
		(used on			Drawings No.				
3rd ANGLE PROJECTION					MB-100				
	From				Scale	3/4"	1"	1"	Rev.
IF IN DOUBT ASK	COMPUTER GENERATED DO NOT ALTER BY HAND				NTS	1	1	1	A