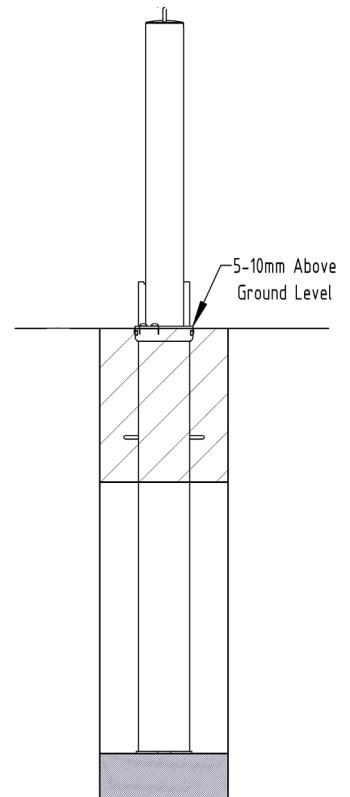
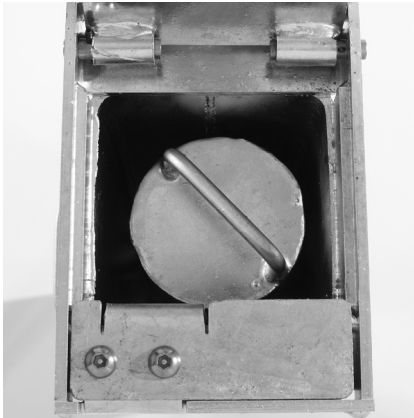


# Post 500mm Galvanised, Galvanised & Colour or Stainless



This simple, cost effective, yet highly effective way to prevent unwanted vehicle access. The Post is raised and lowered vertically. When lowered the post is fully below ground and covered using the integral lid. The post is padlockable (padlock not supplied) in the raised position by first rotating the post 45° and then attaching the padlock between the post to the lid. The Post 500 is 500mm above ground in the raised position.

The Post 500 is ideal for protecting vehicle forecourts, commercial premises, car parks and domestic driveways.

## Description

60mm Galvanised
60mm Galvanised & Colour
60mm Stainless
76mm Galvanised
76mm Galvanised & Colour
76mm Stainless
90mm Galvanised
90mm Galvanised & Colour
90mm Stainless

## Lift Weight (kg)

3kg
3kg
2kg
4kg
4kg
3kg
5kg
5kg
4kg

## Weight (kg)

13kg
13kg
12kg
14kg
14kg
13kg
15kg
15kg
14kg

## Product details

- 500mm (Height above ground when raised)
- Other colours can be provided on request (RAL no. to be advised)
- 3mm wall thickness - Galvanised and galvanised & colour
- Socket - 760mm (below ground)
- Red/White chevron tape available extra
- 2mm wall thickness - Stainless steel

## Installation & use

It is recommended that posts are placed no further than 1,200mm apart to ensure no vehicle may pass between the raised posts. An excavated hole (no less than 900mm deep and 300mm diameter) is required for installation. Provision for suitable drainage must be made (chippings or similar) at the bottom of the hole. The uppermost 3-400mm must be concrete. The lid of the post should be no more than 10mm above finished ground level. This product is guaranteed for 12 months (if installed and used correctly).

