

1: MARK POSITION OF POSTS

**GATE WIDTH
+ 30MM – 60MM**

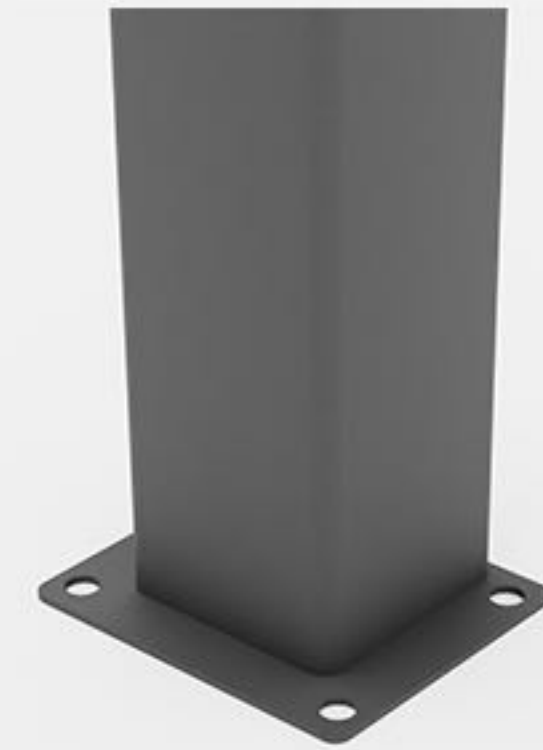


2: FLOOR OR CONCRETE MOUNT



**CONCRETE -
GO TO STEP 5**

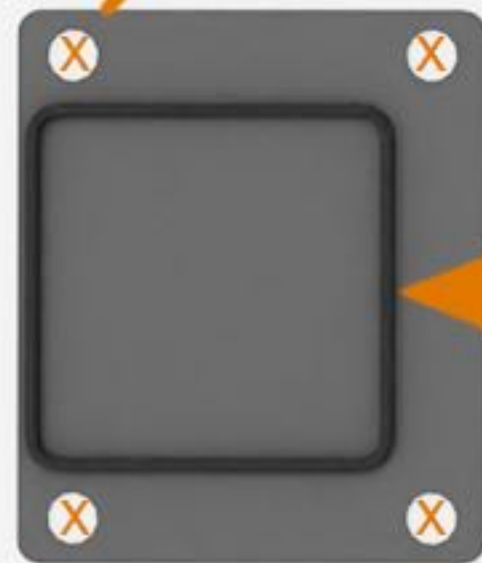
OR



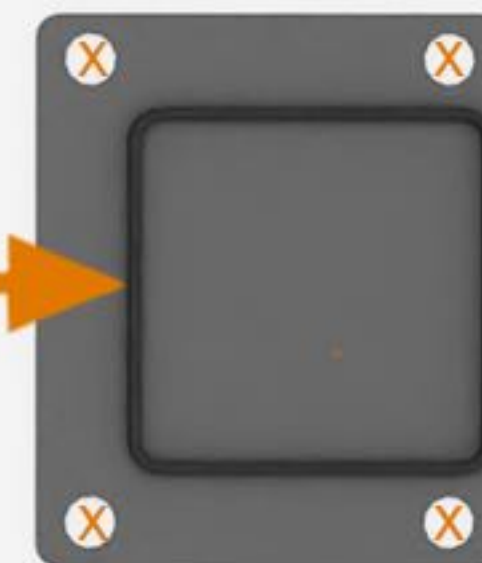
**FLOOR MOUNT -
GO TO STEP 3**

3: DRILL FLOOR BOLTS

10MM DRILL - 8 PLACES



GATE WIDTH
30MM - 60MM



4: FIX TO FLOOR



GO TO STEP 8

NOTES

- **M10 X 75MM BOLTS**
- **8 X PLACES**
- **WRENCH OR SOCKET SET**



***FOR CONCRETE MOUNT ONLY**

5: DIG POST HOLES

**DIG 2 x POST HOLES
MINIMUM 500MM
BELOW GROUND LEVEL**



6: CUT 2 X POSTS TO LENGTH

**GATE HEIGHT
+ 100MM FROM
GROUND LEVEL**



7: CONCRETE POSTS

SET WIDTH BETWEEN POSTS
GATE WIDTH + 30MM - 60MM

USE QUICKSET CONCRETE

ENSURE POSTS ARE
SQUARE IN BOTH AXIS



NOTES

- **BRACKET TO POST**
40MM MIN
60MM MAX
- **DRILL 2 x PLACES**
- **10MM DRILL**



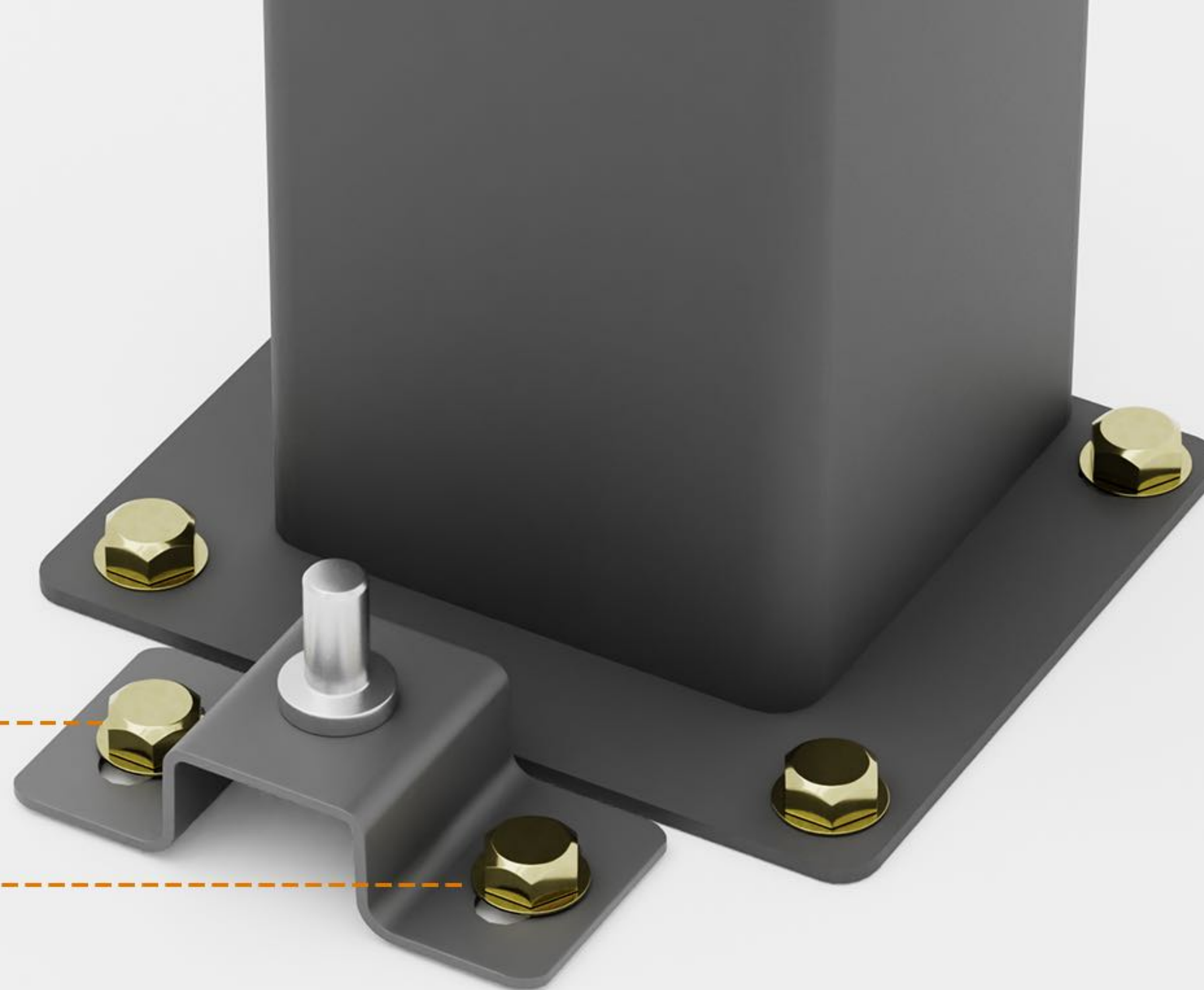
8: FLOOR SPIGGOT





9: PRE-ASSEMBLE LOWER SPIGGOT

**M10 BOLTS
2 x PLACES**



10: FIX LOWER HINGE TO FLOOR

11: ASSEMBLE UPPER SPIGGOT



NOTES

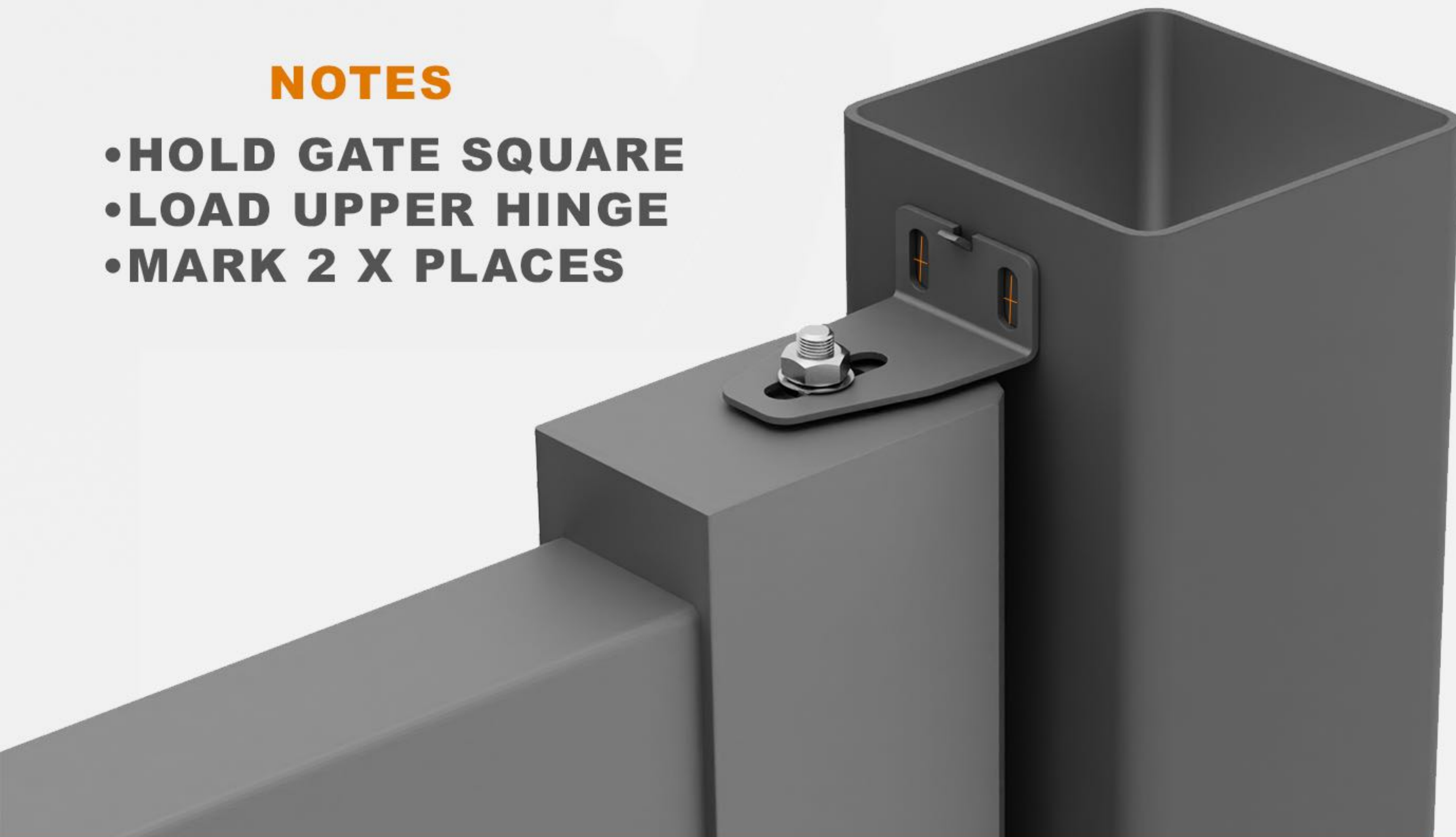
- OPPOSITE TO LOWER BRACKET

12: LOAD GATE - HOLD SQUARE



NOTES

- HOLD GATE SQUARE
- LOAD UPPER HINGE
- MARK 2 X PLACES



13: MARK UPPER HINGE POSITION

NOTES

- **DRILL 2 x PLACES**
- **12MM DRILL**



13: DRILL POST

NOTES

- 2 x M12 x 35MM
- 2 x M12 NUTS
- 4 x WASHERS



14: FIX UPPER HINGE

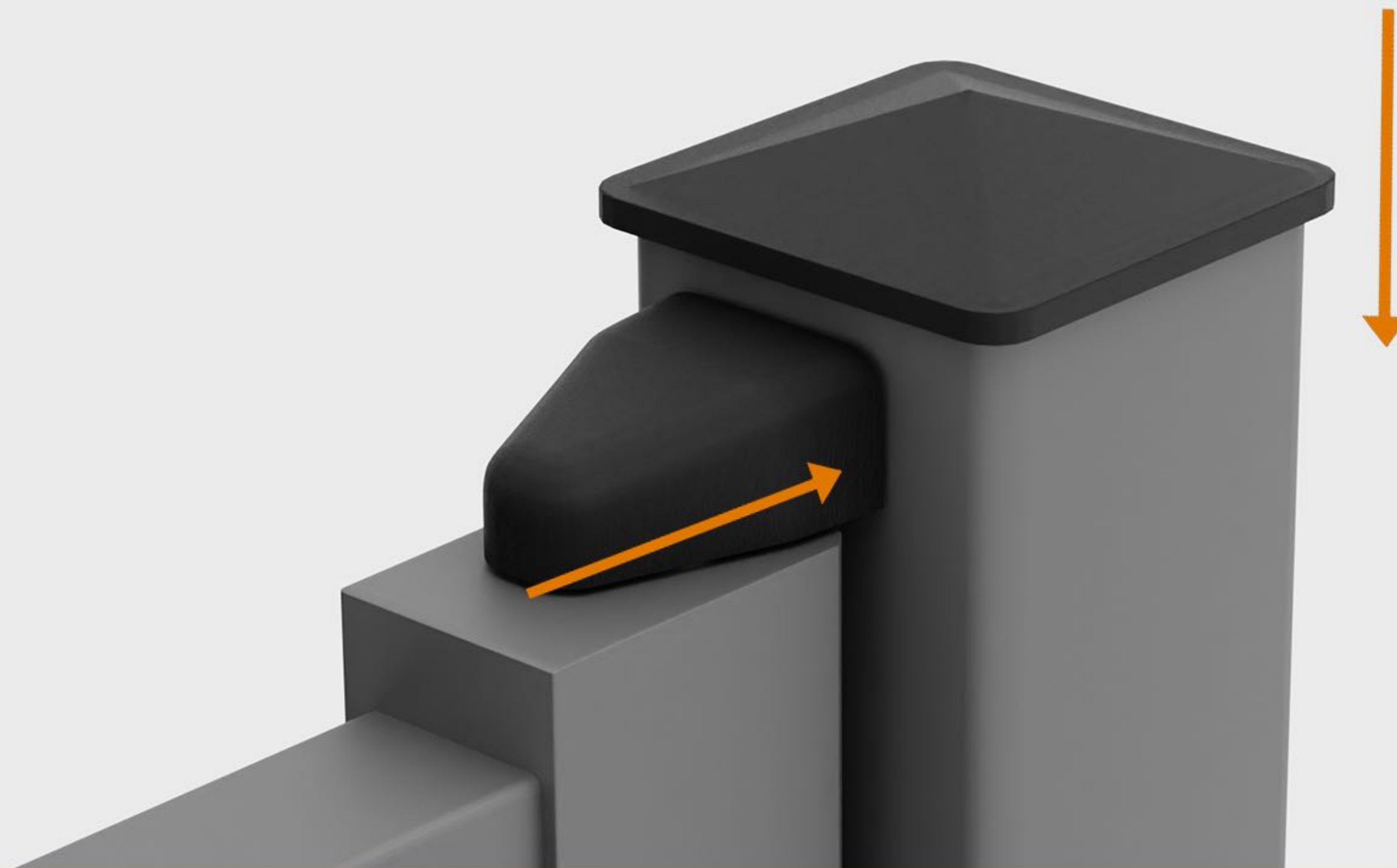
**REPEAT
STEP 8 TO 15
FOR LH GATE**



10MM GAP

17: ADJUST UPPER HINGES





18: FIT COVERS - 4X PLACES

PROJECT COMPLETE

