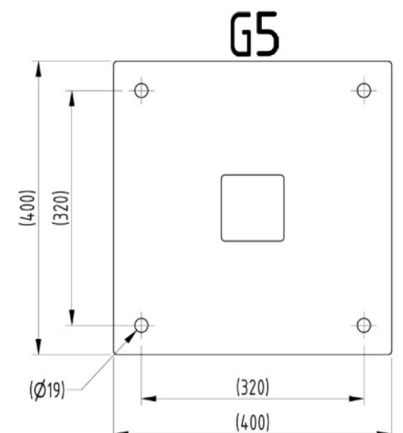
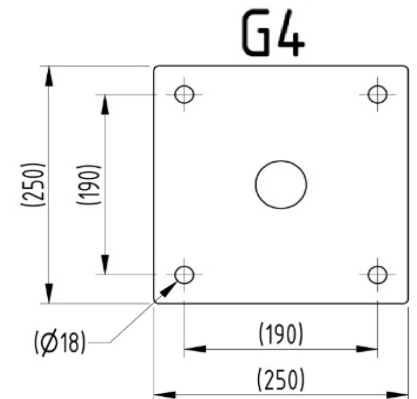
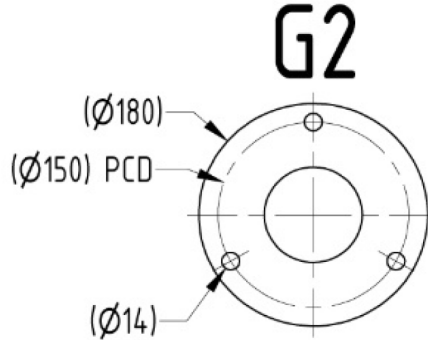
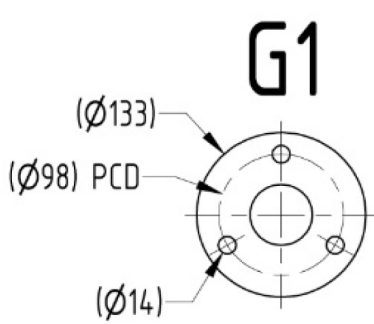




# Accessories

## Bolt Down / Flange Plate - Round Tube Mild Steel



Bolt down/flanged products are supplied with a base plate(s).

Base plates can vary in size and shape (round or square) dependant on the product.

Bollards will have one flange plate, perimeter barriers will have 2 flange plates (one per leg). Some products such as various ACP's will have 3 base plates (one per leg).

Mild steel products are supplied galvanised.

Tube Diameter (mm)	Flange Details							
	Thickness	Shape	Size	# of Holes	Diameter of holes	# of Fixing	Size of fixings	Type
48	5mm	Round	133mm	3	14mm	3	12mm	G1
60								
76								
90	5mm	Round	180mm	3	14mm	3	12mm	G2
101								
114								
127								
139	10mm	Square	250mm x 250mm	4	18mm	4	16mm	G4
152								
168								
193								
219								

### Product Details

- Galvanised mild steel
- 3/4 bolts required (size and quantity dependant on shape/diameter)
- Square or round (dependant on diameter)

### Installation & use

Bolt down to a suitable concrete surface.  
 Telescopic, removable and concrete in are supplied with welded fixing spikes to ensure firm ground anchorage into concrete.  
 Telescopic, removable and concrete in require a suitable excavated hole for installing into concrete.  
 Products are guaranteed for 12 months (if installed and used correctly).



[www.autopa.co.uk](http://www.autopa.co.uk)  
 +44 (0)1788 550556

AUTOPA Limited  
 Cottage Leap, Rugby, Warwickshire CV21 3XP

