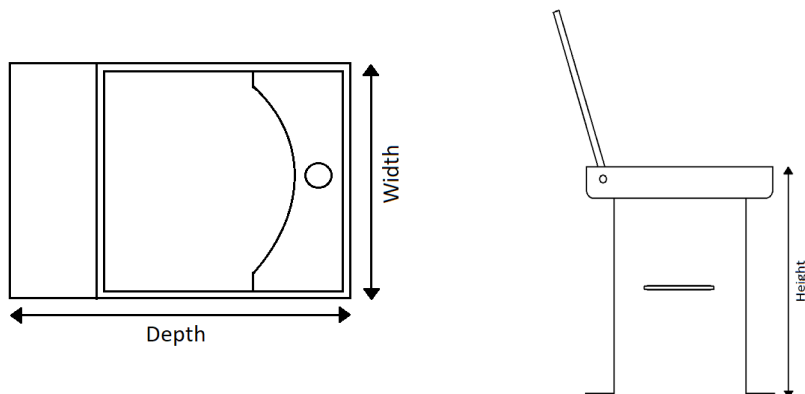




# Accessories

## Removable Socket

### Key Locking



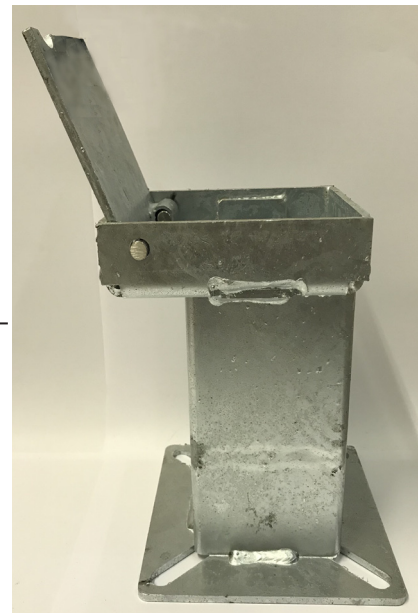
Removable products are supplied with a socket, which will require casting into concrete.

Sockets are manufactured from galvanised mild steel.

2 keys to suit the lock are supplied if purchased as a complete product.

Additional sockets can be purchased at extra cost, if required. Parts such as the lid can also be purchased at extra cost.

Padlockable sockets also available.



Part Number	Description	Size - Depth x Width x Height	Weight
138 501 417	RGP 100SQ SOCKET & LID ASS GALV	175mm x 115mm x 265mm	6kg
138 501 421	RGP 120SQ SOCKET & LID ASS GALV	195mm x 135mm x 265mm	8kg
138 501 552	RGP 150SQ SOCKET & LID ASS GALV	225mm x 160mm x 280mm	9kg
138 501 624	RGP 225SQ SOCKET & LID ASS GALV	310mm x 245mm x 280mm	15kg

Part number	For use with diameters		
	Mild Steel - Round	Mild Steel - Square	Stainless steel - Round
138 501 417	76	60	76
138 501 421	90	70	90
138 501 552	101 and 114	90	101 and 114
138 501 624	139, 168 and 193	120	139 and 168

### Installation & use

Bolt down to a suitable concrete surface.

Telescopic, removable and concrete in are supplied with welded fixing spikes to ensure firm ground anchorage into concrete.

Telescopic, removable and concrete in require a suitable excavated hole for installing into concrete.

Products are guaranteed for 12 months (if installed and used correctly).



[www.autopa.co.uk](http://www.autopa.co.uk)  
+44 (0)1788 550556

AUTOPA Limited  
Cottage Leap, Rugby, Warwickshire CV21 3XP

