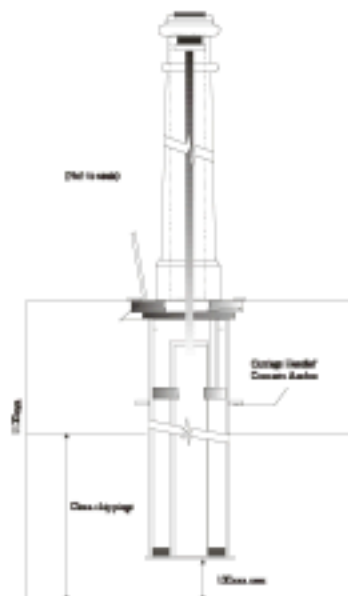


INSTALLATION INSTRUCTIONS MARSHALLS RTSU5 RHINOCAST TELESCOPIC SECURITY POSTS



Determine position of installation. Recommended distance between centres: 1250mm, maximum 1400mm.

Break surface and bore hole 1170mm deep by 350mm diameter.

Fill hole with approx. 100mm of suitable aggregate eg: 15mm stone.

Lower post into hole and check height.

Add or remove aggregate until desired height is obtained.

Position post central in bore hole and add more chippings until post stands unaided.

Withdraw sliding post and manoeuvre into vertical position using a spirit level.

Add more backfill until approximately 500mm from surface.

Fill remainder of hole with 4:2:1 concrete mix and smooth off neatly to lid surround, leaving slight fall away. ~~Groundworks variable depending on site conditions.~~

Finally check again using a spirit level and retract post gently into ground and lock.

Leave for 24 hours before operating.

Keep upperpost clean during fitting procedure.

When lowering post do so in controlled manner. Do not allow it to free-fall down into base.

~~Groundworks variable depending on site conditions.~~

Maintenance

Keep Sliding Post clean using warm, soapy water (washing up liquid) and then rinse thoroughly with clean, cold water. For any stubborn stains apply Cit type cream (non bleach) with paint brush and rub clean with clean cloths or use a soft plastic brush (car wash type) then rinse with cold water. We recommend cleaning every 6 weeks but this depends on the type of environment the products are subjected to.

Flush out and lubricate lock with WD40 or similar weekly.

Always close cover plate after use.

WARNING

FAILURE TO COMPLY WITH THESE INSTRUCTIONS MAY CAUSE MALFUNCTION OF THE POST AND INVALIDATION OF YOUR WARRANTY. PLEASE ADHERE TO THEM.